

## Music CD

---

**Full Window**

**Mini Window**

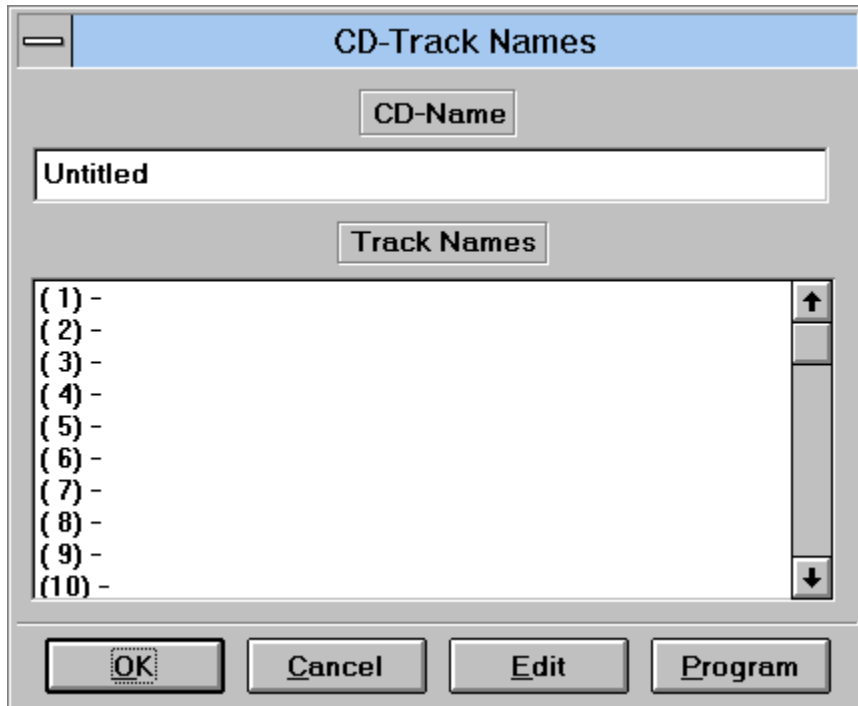
**KeyBoard**

**Technical Support**

**Registration**

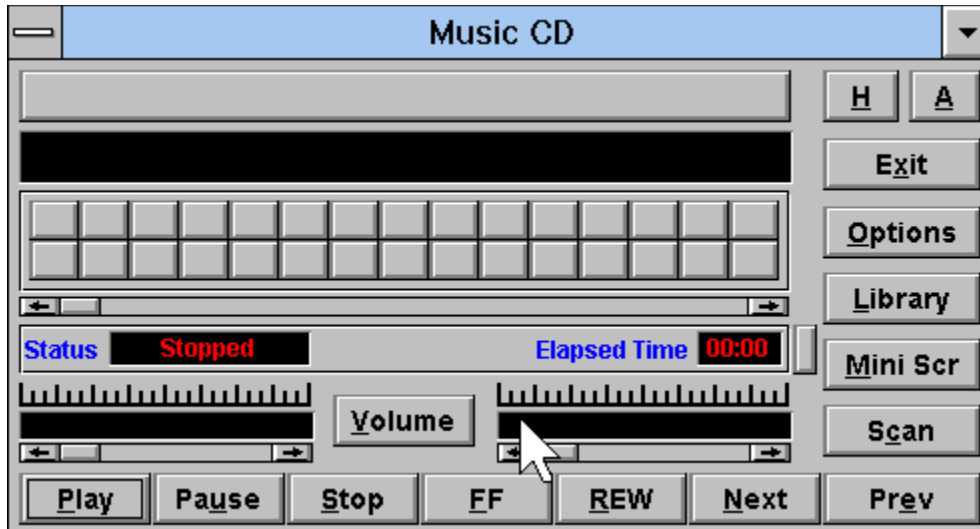
## Track Names

When you wish to enter the name of the current CD and/or add or edit the names of the tracks on the current CD, then use this dialog box.. To view a description of the buttons or view areas, either tab to what you wish to view and press the Enter key, or move the mouse to the area you wish until you see the hand cursor, then click the left mouse button.



## Full Window

This window is displayed when first accessing Music CD, unless the Mini Window option is displayed. To view a description of the buttons or view areas, either tab to what you wish to view and press the Enter key, or move the mouse to the area you wish until you see the hand cursor, then click the left mouse button.



## **CD Name**

---

**Used to enter or edit the name of the current CD in the drive. The name you enter will appear on the button bar that you pressed to access this dialog box. The name can be up to 35 characters in length. To add or edit a name, either tab to this edit box using the keyboard, or use the mouse and click on the edit box.**

## **CD/Track Names**

---

List box shows the individual track names on the current CD. There are three ways to add or edit the name of a track.

The first way is to tab to the track names list box (track 1 will be highlighted), use the up and down arrow keys to highlight the track to be added or edited, then tab to the edit button below and press the enter key.

A second way is to click the desired track track one once, then click the edit button below.

The third and easiest way are to just double click the desired track.

After you select a track, an edit box will appear. Type in the name of the song you wish to assign to the current track, up to 35 characters in length, and then press the OK button to make the entry or the Cancel to cancel the current entry.

**OK**

---

**Update any changes made, then  
exits the current dialog box.**

## **Cancel**

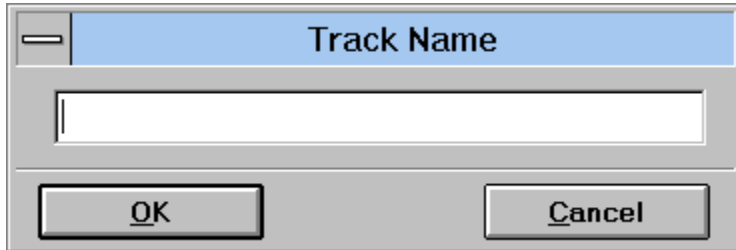
---

**Cancel any changes made, then exits the current dialog box.**

## Edit

---

Used to add or edit the name of a track on the CD. When pressed, the dialog box shown below will appear. After typing a name up to 35 characters in length, press the OK button to make the entry, or press the Cancel button to cancel any changes made.



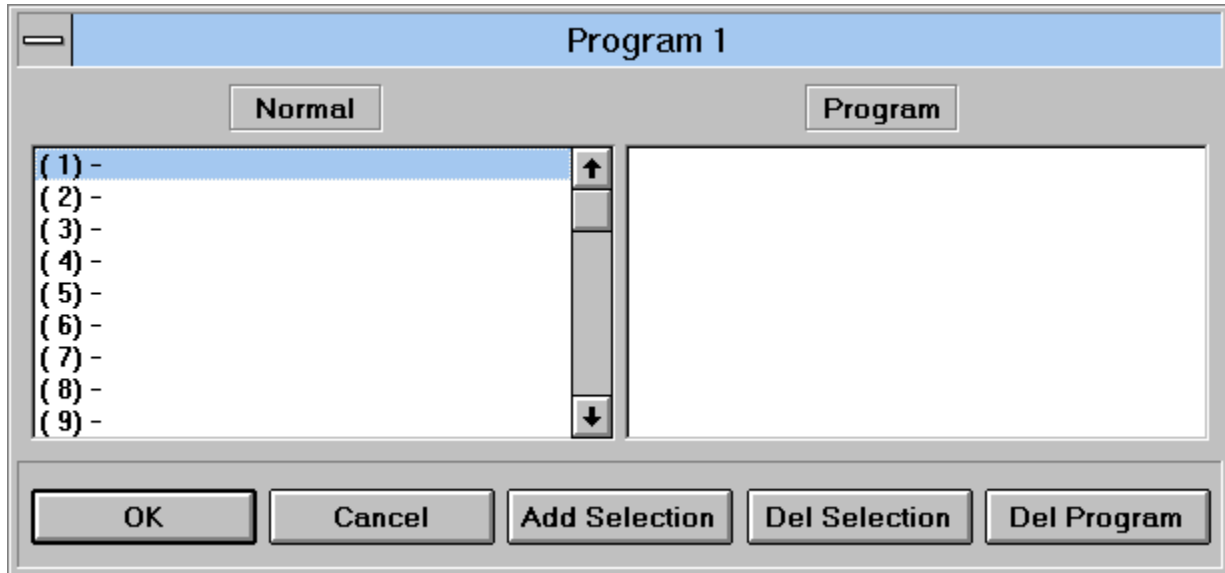
A dialog box titled "Track Name" with a blue header bar. Below the header is a white text input field. At the bottom of the dialog are two buttons: "OK" and "Cancel".



## CD Program

---

This dialog box is displayed when you wish to create or edit a program that plays the CD in a selected sequence. Your program can contain up to 99 entries. To view a description of the buttons or view areas, either tab to what you wish to view and press the Enter key, or move the mouse to the area you wish until you see the hand cursor, and then click the left mouse button. Note that if the CD is playing while adjustments are being made, then when you exit the dialog box, the CD will either continue or stop play depending on what adjustments were made.



## **Tracks Names**

---

**Displays the available tracks you can you use to create or edit a CD program. A track need not be named in order to add it to a program. If no name has been assigned to the track being added, then when being played. it will be displayed on the screen using the name Track followed by the track number.**

## **Program List**

---

Show the sequence that the CD is played if the Play CD Program option is selected. Up to 99 track entries can be added to a program list for any CD.

There are three ways you can add a track to the program list.

The first way is to tab to the list box containing the track entries, highlight the track you wish to add using the up and down arrow keys, tab to the program list box, highlight the insertion point, tab to the Add Selection button and press the enter key. (The insertion point is where the name of the track will be added in the program list. It is added after the highlighted insertion point, not before.)

The second way to add a track to the program list is to highlight the track to be added from the track name list using the mouse, then highlight the insertion point in the program list, then click the add selection button.

The third and most easiest way to add a track to the program list is to highlight the insertion point in the program list, then double click the track you wish to add from the track name list box.

If you wish to remove an entry from the program list then you can do it in one of two ways. The first is to highlight the entry you wish to remove and select the Del. Selection button. The second way is to just double click the entry to be removed from the program list.

## **Del. Selection**

---

**Removes an entry from the program list. To remove an entry, highlight the entry you wish to remove and select this button.**

## **Add Selection**

---

**Used to add a track to the program list. After highlighting the track to be added from the track names list, and selecting the insertion point in the program list, then press this button to add the track**

## **Del Program**

---

**Press this button if you wish to  
remove the CD program created  
for the current CD.**

## **Current Track Name**

---

**Displays the current name of the track being played. If no track name was defined in the CD-Track Names dialog box then the word Track followed by the number of the current track being played is displayed.**

## Track Buttons

---

Allows you to select and play a track on the CD. If you are playing the CD in normal order the tracks will appear in sequential order. If you are playing a program you created, the track numbers appear in the order you defined. The program you created is played by setting the Play CD Program in Options. You select a track to play in one of two ways, either by using the mouse to click on one of the tracks, or use the keyboard. With the keyboard method you press the Tab key until the Track Buttons have the focus (the first button will display the first track number in white), then use the arrow keys to move to the track you wish to play, and then press the Enter key. As you move through the tracks using the arrow keys the track selected will appear in white. If you use the mouse method then when the left mouse button is pressed, the name of the current track is displayed in the Current Track Name window. If you decide not to play that track then move the cursor off the track without letting up on the left mouse button.

The maximum amount tracks that can be displayed on the screen is 30. If your CD has more than 30 tracks or you defined a program with more than 30 tracks to play, then a scroll bar will appear to the right of the Track Buttons. You can move through the tracks using the keyboard method above, or you can tab to the vertical scroll bar (flashing cursor will appear on the scroll bar) that appears and use the mouse or the keyboard to scroll through the rows of track numbers.

The current track playing will always appear in the color green. When that track stops playing, it will revert back to the color red and the next track to play will appear in green.

After the last track is played, the CD will either stop or begin playing at the start depending on the setting of the Restart at End option, set through Options.



## **Button Scrollbar**

---

**If the current CD has more than 30 tracks, whether in normal or program mode, then this scrollbar will appear allowing you to scroll the desired track into view. The scrollbar will not appear if there are 30 tracks or less. To scroll, either tab to the scrollbar and press the up and down arrow keys, or use the mouse and click on the up or down arrows on the scrollbar.**

## **Track Scroll**

---

**Allows you to scroll the current track playing forward and backwards. You can use the mouse or the keyboard by tabbing to the scroll bar (flashing cursor will appear). The scroll bar operates like any scroll bar in Windows.**

## **Status Bar**

---

**Displays the elapsed time or remaining time of the current track playing, plus the current status of the CD. This status bar only appears in the full screen display, not Mini Window display.**

## **Left Volume**

---

**If your hardware setup has the capability of volume control then this will show the current volume level. If your hardware allows for left-right volume control then this will show the level of the left channel. If your hardware allows volume control but not left-right channel separation then the left and right volume levels will be the same.**

## **Right Volume**

---

**If your hardware setup has the capability of volume control then this will show the current volume level. If your hardware allows for left-right volume control then this will show the level of the right channel. If your hardware allows volume control but not left-right channel separation then the left and right volume levels will be the same.**

## **Left Volume Scroll**

---

**If your hardware setup has the capability of volume control then this will allow you to have volume control. If your hardware allows for left-right volume control then this adjust the level of the left channel or the single volume level depending on the options set in the volume dialog box. If your hardware allows volume control but not left-right channel separation then the left and right volume levels will be the same.**

## **Right Volume Scroll**

---

**If your hardware setup has the capability of volume control then this will allow you to have volume control. If your hardware allows for left-right volume control then this will show the level of the right channel or the single volume level depending on the options set in the volume dialog box. If your hardware allows volume control but not left-right channel separation then the left and right volume levels will be the same.**

## Volume Control

---

If your hardware supports volume then you can control as well as set several volume options as shown below. If your hardware does not support volume control then you will not be able access this screen. You can set the options to be global (applies to all CD's), or local (applies only to current CD). Any options that you set are for the current CD session only, unless you have the global or local option set. For a complete description of each option, either use the Tab key to tab to the option and press the enter key, or click on the option with the mouse.





## **Set Global**

---

**If you wish the volume options you set to apply to all the CD's that you play then select this option. If the Set Local options is on, it will override the global options.**

## **Sel Local**

---

**If you wish the options that you set to apply to this CD session as well as every time you play this one CD then select this option. This will not destroy any global options that are set, they are still in effect for all other CD's.**

## **Single Volume**

---

**Selecting the Single Volume option will make the left and right volume channels adjust up and down proportionally to one another, when you adjust the left volume the right channel will adjust to the same level and vice versa. If your hardware does not allow you to adjust for left and right volume then this will be the default setting, or if no option was selected then Single Volume will be the default option.**

## **Left-Right Volume**

---

**If you wish to control the left and right audio channels separately and your hardware supports it, then select this option.**

## **Right-Left Volume**

---

**If when adjusting the left volume you notice that the volume in the right speaker increases or decreases then set this on. Some speakers are set up reverse so this will correct to left-right.**

## **Level Volume**

---

**If the left and right audio channels are not equal and you wish them to be then press this button to set them even. The volume will not be leveled until you exit this dialog box.**

## **Volume Lock**

---

**If after adjusting the left and right volume levels to where you want them and you wish the volume levels to adjust proportionally to one another when you select the left or right volume control then select this option. This will lock the left and right channels in place. Note that if you select the Single Volume option instead of this one then the left and right volume levels will be set equal to one another.**

## **Use Current Volume**

---

**If you wish to save and use the last volume levels that you used when you exited Music CD then set this option.**



## **Play**

---

**Begins playing the CD. If the CD that you are playing contains files on the first track, then it will attempt to begin play on track 2. The above does not apply if you are playing a program that you created for the CD.**

## **Pause**

---

**Pauses play on the CD. To begin playing again, either select pause again, or select Play.**

## **Stop**

---

**Clears the screen and stops  
playing the CD.**

## **FF**

---

**Allows you to move fast forward through each track on the CD. When the end of the track is reached the next track will begin. If on the last track of the CD, play will restart at track one if the Restart at End option is set, or it will stop if the Stop at End option is set. While fast forward is on, the track name, track buttons, track scroll, and the elapsed time of the current track will adjust accordingly. To stop fast forward, press the FF again, or select play.**

## **REW**

---

Allows you to rewind through each track on the CD. When the end of the track is reached the previous track will begin. If on the first track of the CD, play will restart at track one if the Restart at End option is set or it will stop if the Stop at End option is set. While rewind is on, the track name, track buttons, track scroll, and the elapsed time of the current track will adjust accordingly. To stop rewinding, press the REW again, or select play.

## **Next**

---

**Selects the next track on the CD to play if in normal mode, or selects the next track in the program if playing a program you created. If on the last track of the CD, play will restart at track one if the Restart at End option is set or it will stop if the Stop at End option is set.**

## **Prev**

---

**Selects the previous track on the CD to play if in normal mode, or selects the previous track in the program if playing a program you created. If on the first track of the CD, play will restart at track one if the Restart at End option is set or it will stop if the Stop at End option is set.**

## **Help**

---

**Displays the help screen for Music CD.**



## About

---

**Displays the about screen for Music CD.**

## **Exit**

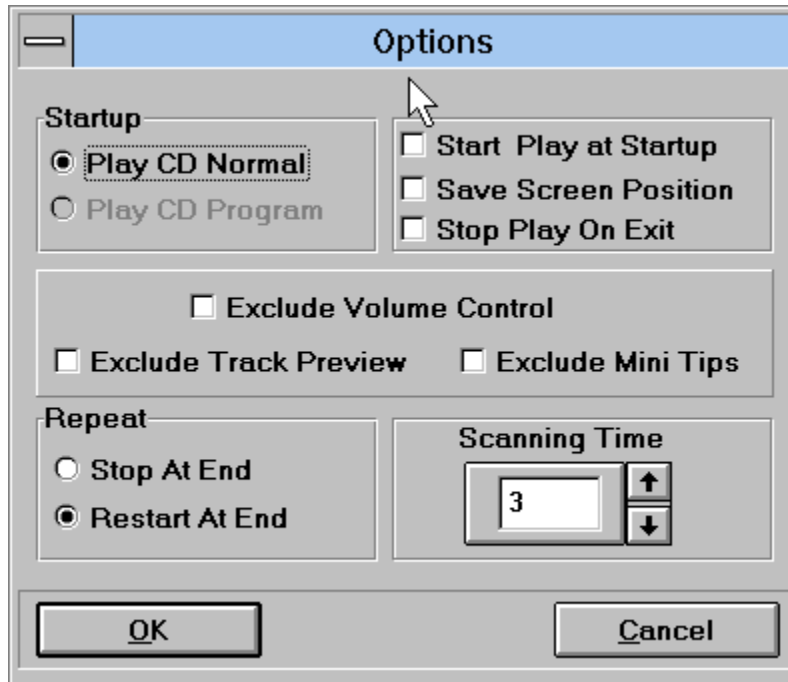
---

**Exits Music CD. If the Stop Play  
on Exit option is set the music will  
stop playing otherwise the music  
will continue to play.**

## Options

---

Allows you to set various options for controlling the play of the CD. For a complete description of each option, either use the Tab key to tab to the option and press the Enter key, or click on the option with the mouse.



## **Play CD Normal**

---

**Begins playing the CD in sequential order beginning at track 1. If the CD you are playing has both files and CD music on it, then an attempt will be made to start play at track 2.**

## **Play CD Program**

---

**Plays the CD in the order that you defined in the program dialog box.**

## **Stop at End**

---

**If this option is set then the CD will stop after the last track is played.**

## **Restart at End**

---

**If this option is selected then after the last track on the CD is played, it will start at the beginning again.**

## **Start Play at Startup**

---

**If you wish the CD to begin playing when you startup Music CD, then select this option.**



## **Save Screen Position**

---

**If you wish the current position of the screen to be saved so it will startup at the same screen position next time you start Music CD, then select this option.**

## **Scanning Time**

---

**Allows you to select a desired scanning time when you are scanning the CD. The default is 3 seconds, but you can set the time anywhere between 1 and 30 seconds. To change, use the mouse to click the scroll bar up or down, or just type the time in the edit box.**

## **Stop Play on Exit**

---

**If this option is selected then the CD will stop playing when you exit otherwise it will continue to play.**

## Mini Window

---

This is the window displayed when first accessing Music CD, unless the Full Window option was selected. To view a description of the buttons or view areas, either tab to what you wish to view and press the Enter key, or move the mouse to the area you wish until you see the hand cursor, then click the left mouse button.



## **Scan**

---

**Allows you to scan through the CD for a specified period of time. The default scanning time is 3 seconds, but you can set the scanning time anywhere from 1 to 30 seconds through the options dialog box. The track name, track buttons, track scroll, and the elapsed time of the current track will adjust accordingly while scanning.**

## **Track Edit**

---

**Use to add or edit a track name.  
Type in the name of the track , up  
to 35 characters in length, then  
press the OK button to make the  
entry or the Cancel to cancel the  
current entry.**

## **Volume Up**

---

**Increases volume. Left and right channels will be adjusted proportionally.**

## **Volume Down**

---

**Decreases Volume. Left and right channels will be adjusted proportionally.**



## **Full/Mini Screen**

---

**Allows you to move between the full screen and the mini screen of Music CD. If the full screen is currently displayed, then selecting this will display the mini screen. If the mini screen is currently displayed, then selecting this will display the full screen.**

## **Technical Support**

---

**If while using Music CD you run into any problems, wish to report a bug, have any general comments, or wish to make a suggestion, then please do not hesitate to contact me at one of the following:**

**Electronic Service CompuServe - 76436,522**

**Electronic Service American On-line - AnnualJohn**

**Electronic Service Prodigy - PXGV15A**

**Mailing address:**

**John Mayo**

**Music CD**

**1010 Hayes Ave.**

**Salisbury, MD 21801-6620**

## KeyBoard

---

If you prefer to use the keyboard rather than the mouse, you may do so by using the Tab key to move to the area of the screen that you wish. Pressing the TAB key moves forward. Pressing the SHIFT-TAB combination moves back.

For buttons, you can determine if it is selected when a light black rectangle appears inside of the button. When you move to the desired button, then press the ENTER key to make the selection.

For scroll bars, you can determine if it is selected when the thumb on the scroll bar begins to flash. Use the ARROW, PAGE UP/PAGE DOWN keys to increase or decrease for the selected scroll bar

For the track button display area, you can determine when it has the focus when the first track appears in white. To make a track selection, use the ARROW, PAGE UP, PAGE DOWN, HOME, END keys to move to the desired track and then press the enter key to start playing the track or song.

Below is a list of accelerator keys you may press to make a selection.

<b>P</b>	<b>Play</b>	<b>U</b>	<b>Pause</b>	<b>S</b>	<b>Stop</b>	<b>F</b>	<b>FF</b>
<b>R</b>	<b>REW</b>	<b>N</b>	<b>Next</b>	<b>E</b>	<b>Prev</b>	<b>C</b>	<b>Scan</b>
<b><u>V</u></b>	<b>Volume</b>	<b>H</b>	<b>Help</b>	<b>X</b>	<b>Exit</b>	<b>A</b>	<b>About</b>
<b><u>O</u></b>	<b>Options</b>	<b><u>G</u></b>	<b>Program</b>	<b><u>G</u></b>	<b>Track Names</b>	<b>M</b>	<b>Full/Mini screen</b>
<b><u>L</u></b>	<b>Library</b>	<b><u>T</u></b>	<b>Time Display</b>				

## **Time Display**

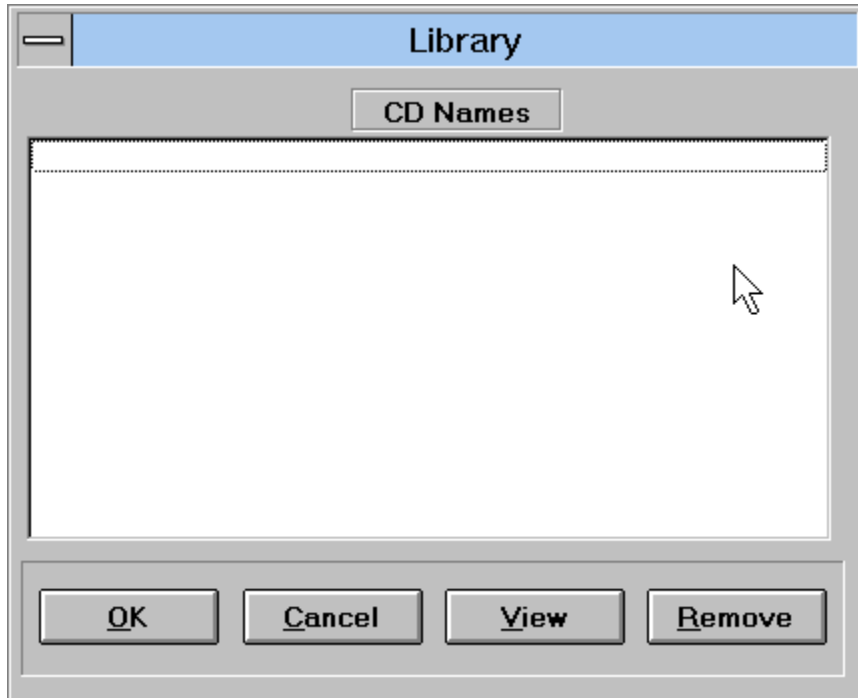
---

Selecting this button allows you to view the current track playing in either in elapsed or remaining time. The status bar will change to reflect the type of time display.

## Library Display

---

Displays the names of the CDs that have been entered. You can view or remove a CD entry, but you cannot edit it. To view a description of the buttons or view areas, either tab to what you wish to view and press the Enter key, or move the mouse to the area you wish until you see the hand cursor, then click the left mouse button.



## **Library Display**

---

**Displays the names of the CDS that have been entered. You can view or remove a CD entry, but you cannot edit it. To edit, you need to have the CD inserted.**

## **View Entry**

---

---

**To view entries made on a previously entered CD, highlight one of the CD names shown in the library display, and select this button.**

## **Remove Entry**

---

**To remove a CD entry from the list in the library display, then highlight the entry you wish to remove and select this button.**



## **Exclude Volume**

---

**If you wish to disable or enable volume control then select this check box. Blank indicates volume control enabled. An X in the box indicates volume control is disable. If volume control is disabled the volume section will be replaced by a BMP.**

## **Exclude Track Preview**

---

Normally when moving the mouse cursor over the track buttons, the name of the track will be displayed in a yellow rectangular box. To disable this feature, select this check box.

### **Exclude Mini Tips**

---

Normally when moving the mouse cursor over the graphical buttons on the mini display, a name describing the function of the button will be displayed in a yellow rectangular box. To disable this feature, select this check box.

## **CD Audio**

---

Select this if your source of audio is directly from the CD.

## **Aux In**

Select this if your source of audio is from an auxiliary device.

## Registration

---

Music CD is not a freeware, but a shareware program. If after trying this product, you decide that you like it, then please send a check or money order for \$12.00 U.S, with your name and address to:

John Mayo  
Music CD  
1010 Hayes Ave.  
Salisbury, MD 21801-6620

You will be sent a disk and a number verifying you are a registered user.  
Thank you for purchasing MUSIC CD.

